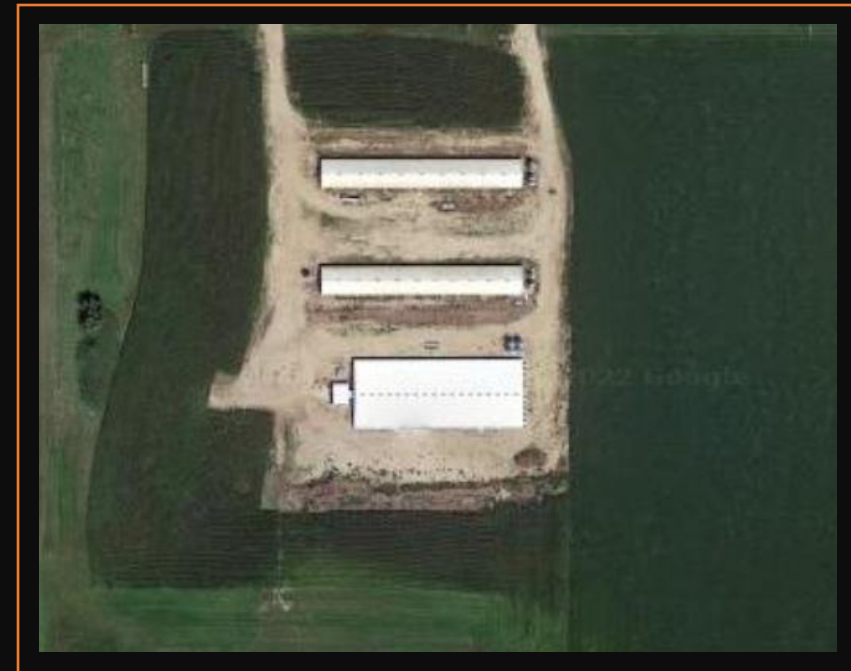

Case Study

25kW Eocycle S-16

LB Hogs, Inc.

Pipestone, MN

Eocycle America Corporation



3 Barn Hog Operation Installation



Featuring:

Eocycle EOX S - 25kW

- This installation was the 1st Eocycle turbine in this far SW area of MN near the SD border
- The installation is just a few hundred feet off busy US Hwy 75



Product Portfolio



The EOX S-16

The S-16's extraordinarily simple design—with very few moving parts—results in high reliability and low maintenance costs.

With **no gearbox**, your turbine will operate simply, reliably and with minimal maintenance for its 30-year life.

The S-16 wind turbine has been recognized by the **Solar Impulse Foundation** as one of the top 1,000 solutions in the world that can protect the environment in a profitable way.



Wind Turbine Specs

30 years

Turbine Life

20 - 30 kW

Rated Power

Class IIIA

16m Rotor Diameter

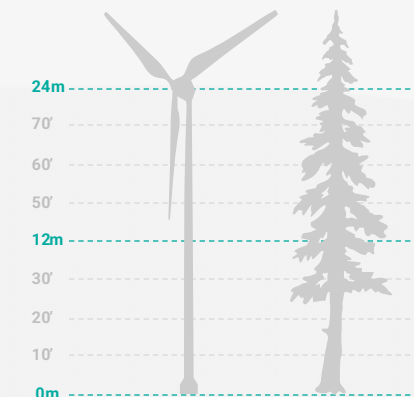
Tilt Up Tower

Fiber concrete Foundation

80' Height (ground to hub)

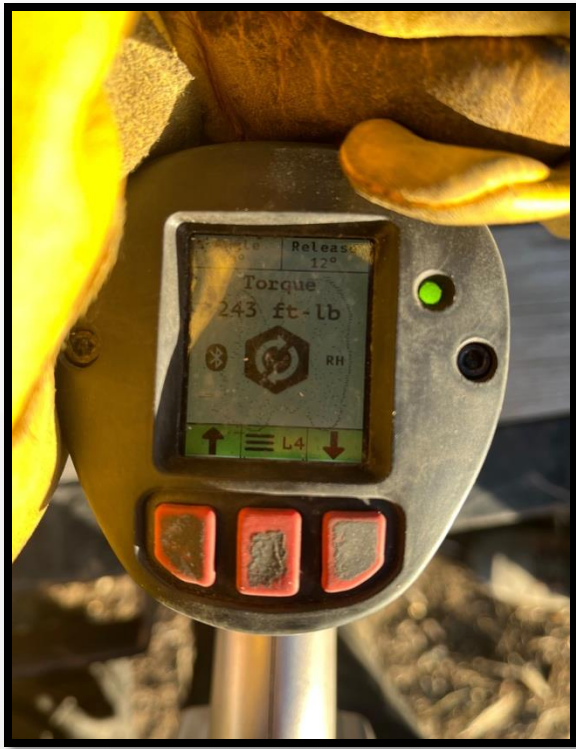
105' Height (ground to blade tip)

**5 Year
Warranty**





***Patented**
Crane-Less
Hydraulic Tower



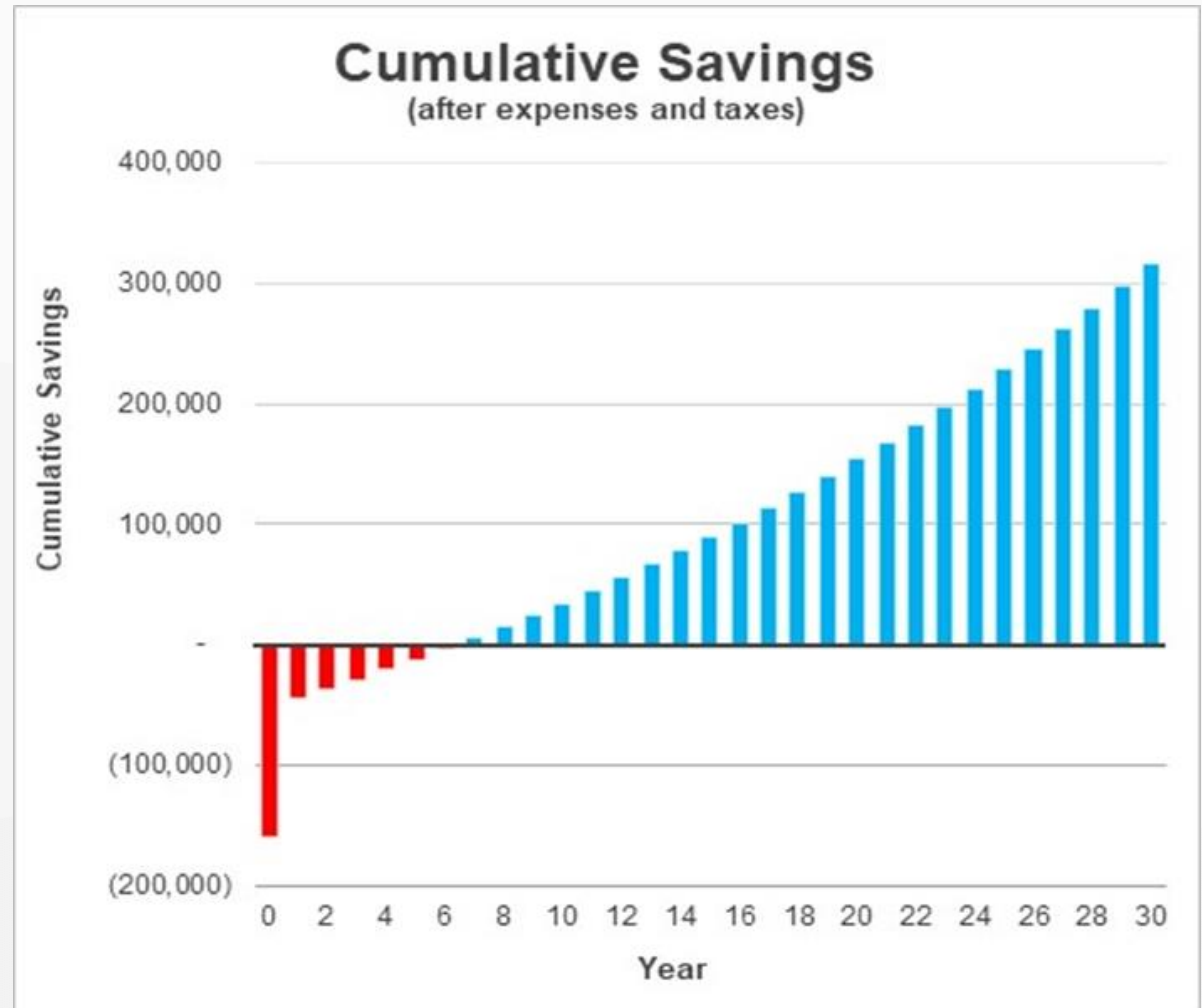
Installation Details - Challenges

- No challenges to report
- Put in service December 16th, 2023



Performance Tool(s) & Method

- Global Wind Atlas + 3rd party certified power curve = Accurate AEP prediction
84,511kWh quoted - actual 82,277kWh
- In-house financial model used to calculate financial return (payback, IRR, LCOE, NPV)
6-year payback
\$331,000 ROI on 30-year life
- In-house WindQUOTE Tool for automated detailed proposal delivery





Installation Cost Breakdown

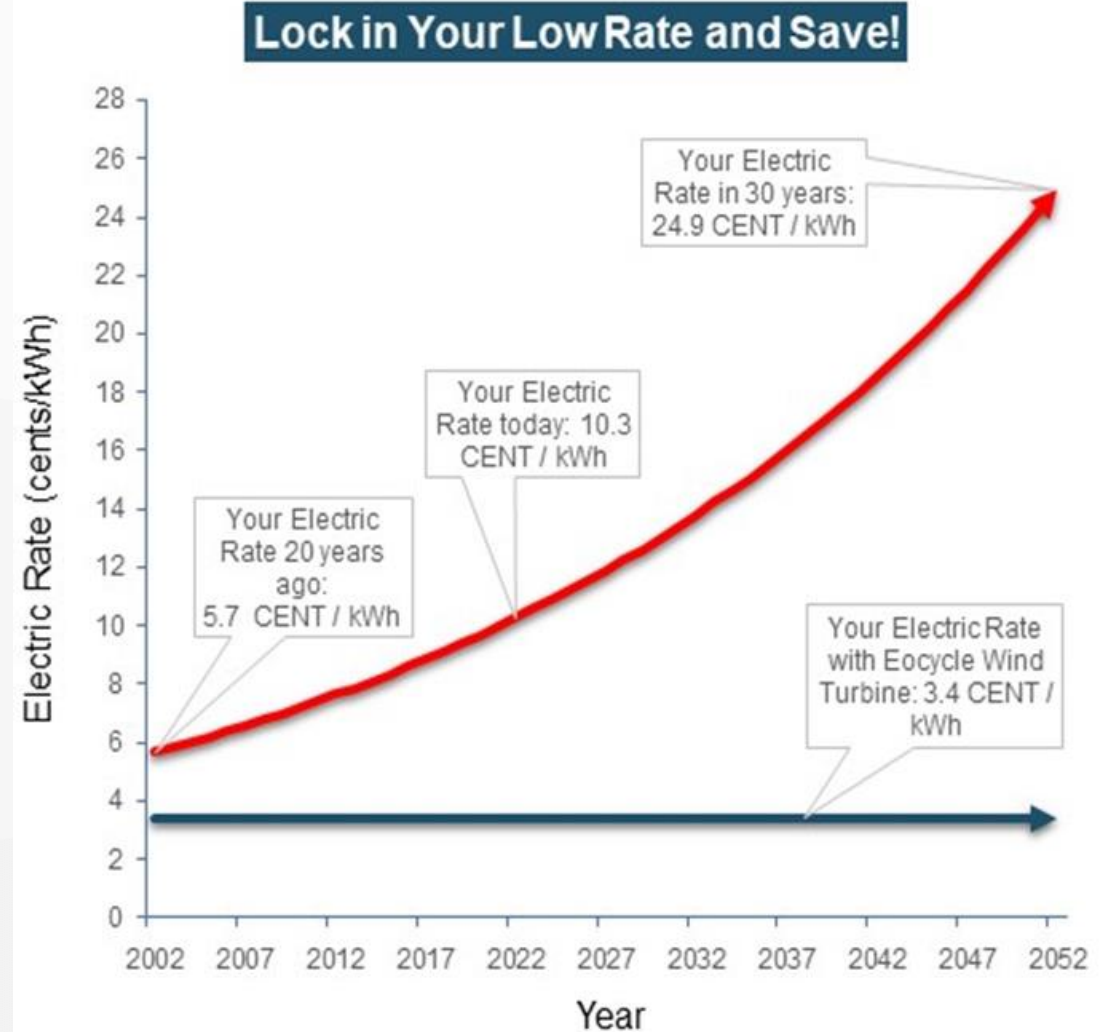
○ Civil Works:	\$ 33,190
○ Electrical:	\$ 13,916
○ Logistics:	\$ 10,825
○ Mechanical Erection:	\$ 20,851
○ Project Management:	\$ 4,979
○ Development	\$ 179
○ Bill of Materials:	<u>\$ 76,405</u>
TOTAL:	\$160,345



Project Economics 25 kW unit

- CAPEX: \$160,345
- OPEX (annual): \$1,500
- Net AEP: 82,277 kWh
- REAP Grant (25%): \$40,086
- ITC: 30%
- Depreciation

- Financial Return:
 - Payback
 - IRR Internal rate of return
 - NPV Net Present Value
 - LCOE Levelized cost of energy



Operating History

For period:

January 1st to December 31st, 2024

- 98.6% Availability
- 82.2 MWh
- 37.3% Capacity Factor

- **Running at 97% of predicted Annual Energy Production (AEP)**



Since this Case Study Install

- 3 more Eocycle S-16 turbines installed in 2024 in this same area
 - Radio Station
 - Cattle Farm
 - Crop Farm



- As of *today*, we have 11 more sold in this area.

By year-end 2025 a total of 15 S-16's to be spinning within a 13-mile radius of each other.

- **RETURNING CUSTOMER**

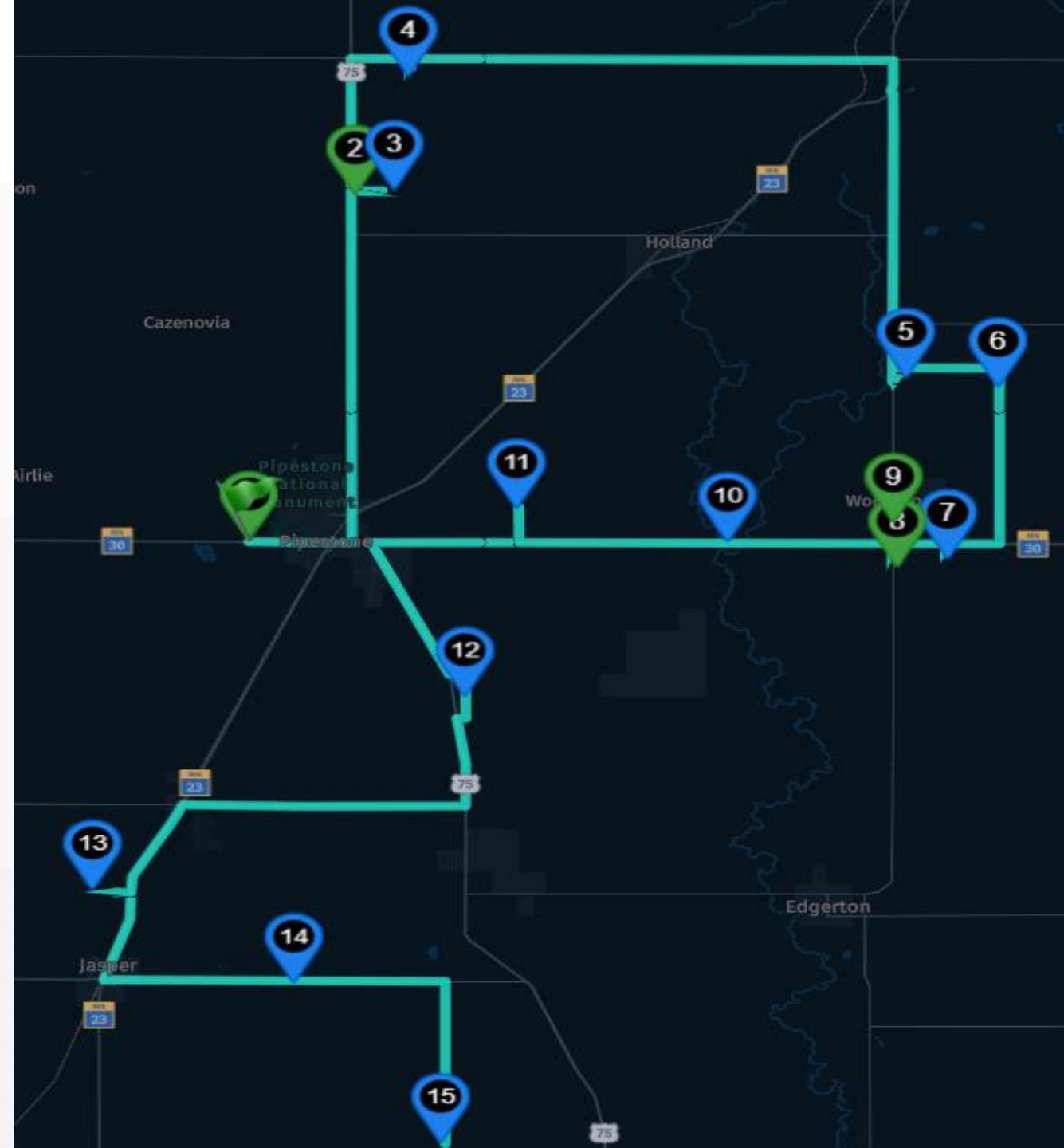
1 of these 11, a 2nd 25kW purchased 11 months after their 1st for this customer case study we are highlighting today, to be installed at a 2nd site.

- **LAST SALE, LAST WEEK**

1 of the 11, was a sale last week purchased without IRA and based on 25% Farm Bill grant.

All 15 of these units are in Minnesota district 7 which is represented by Republican Michelle Fischbach

We have another 15 S-16 25kW Eocycle units already running in Representative Fischbach's district in West Central MN





Change is in the air.

Seize the opportunity now!

Thank You

eocycle 

EOCYCLE

800-269-0924

eocycle.com / info@eocycle.com

Headquarters: Montreal, QC Canada

Offices: Canada & Belgium