

Wind Turbine at Idaho National Laboratory

Idaho Falls, ID 83401 | Skystream 3.7 | 2.4 kW on 70 ft tower | Installed by Skystream Wind Turbines

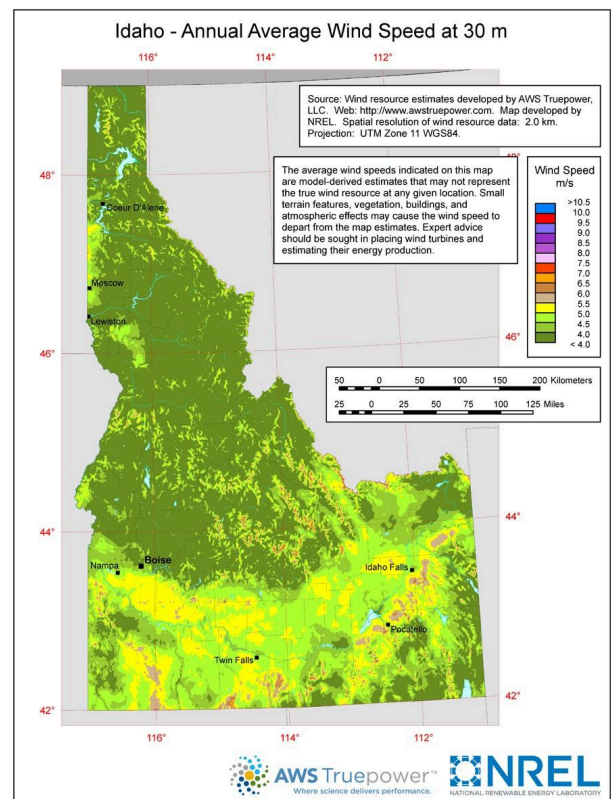
SKYSTREAM 3.7®



Photo Credit: Jake Gentle, Idaho National Laboratory

The **Idaho National Laboratory**, in conjunction with Idaho State University-INL Research Facility, re-installed its wind turbine in 2020 in Idaho Falls, Idaho. Connected behind the meter at 240 VAC 60 Hz, the 2.4 kW Skystream 3.7 turbine provides energy production in a microgrid configuration for use as a research tool.

Designed for small installations, including microgrid applications, the Skystream 3.7 is a user-friendly and turnkey compact generator – with controls and an inverter built-in – able to quietly provide electricity even in very low winds.



“As wind generation in the U.S. continues to grow, it becomes more of a critical generating asset of our bulk electric system” – INL Infrastructure Security Portfolio Manager Jake Gentle¹

¹<https://inl.gov/integrated-energy/idaho-researchers-lead-Doe-effort-to-protect-nations-wind-energy-infrastructure>

Key Findings

- Produces ~ 2100 kWh of energy annually
- Provides data for research

Impact

- Showcases potential of energy independence
- Demonstrates ease of integration of wind energy

More than 104,000 Idaho properties have wind resources suitable for distributed wind with a combined technical potential of 734 MW, per NREL

Want further information? Please see: www.AgWindEnergy.org or www.DistributedWind.org