

Turbines at Ball and Whirlpool Facilities

Findlay, Ohio 45840 | Goldwind | 2 x 1.5 MW Turbines, 278 foot towers | Installed by One Energy

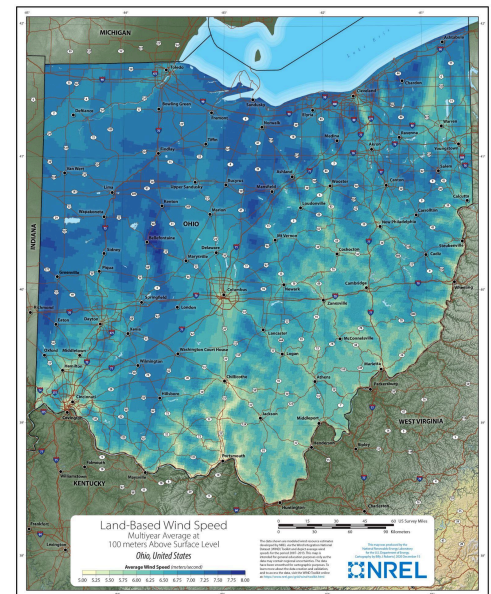


Photo Credit: Hank Doster, One Energy Enterprise LLC

Whirlpool Corporation and **Ball Corporation** have undertaken an innovative energy project at their manufacturing facilities in Findlay, Ohio. The initiative involved the installation of two 1.5-MW Goldwind wind turbines as part of a larger wind farm project. This collaboration with One Energy, an Ohio-based wind energy contractor, aimed to reduce electricity costs and enhance energy independence for both companies.



The project utilized a power purchase agreement (PPA) structure, where One Energy owns and operates the turbines, selling the generated electricity directly to Whirlpool and Ball which allows the companies to benefit from energy generation without the upfront costs and maintenance responsibilities.



Key Findings

- 2 wind turbines generate equivalent of powering 600-800 homes
- Offsets ~ 20% of power demand for each facility
- Provides long-term cost savings on electrical bills
- Creates \$5,000 annually for STEM scholarships

Impact

- Showcases feasibility of wind energy in industrial applications
- Enhances energy independence

More than 215,000 Ohio properties have wind resources suitable for distributed wind, with a combined technical potential of 2.25 MW, per NREL

Want further information? Please see: www.AgWindEnergy.org or www.DistributedWind.org