

Dual Wind Turbines at Goldberg Family Farm

Stewartville, MN 55976 | Ecocycle Wind Energy | 2 x 25 kW Turbines, 80 ft towers | Installed by Ecocycle



Photo Credit: MN State Senator Carla Nelson (24-R)


"It was a joy to stand on this stunning generational farm and learn of the recent energy innovations with the Ecocycle EOX S-16," noted Carla Nelson, Minnesota State Senator. **"EOX S-16 represents cutting-edge wind energy technology, and I'm proud our area is home to such innovation!"**

Key Findings

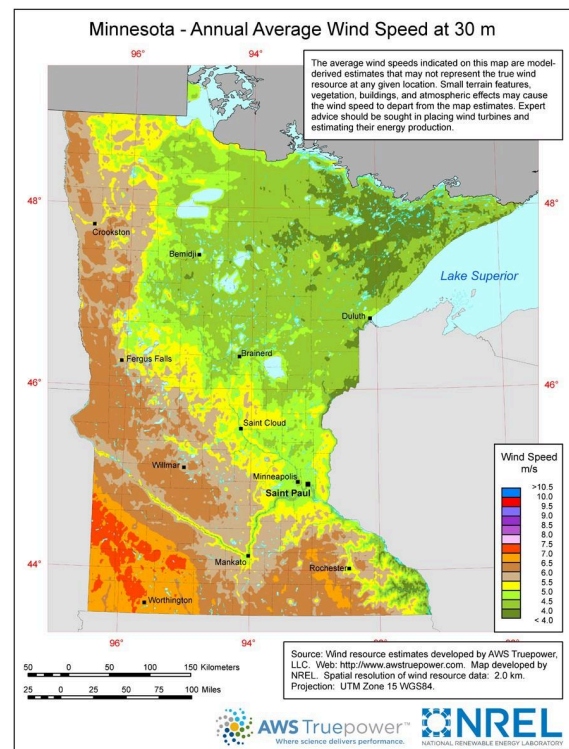
- Produces ~ 140,000 kWh annually (~ 70,000 kWh per turbine)
- Offsets ~ 43% of the farm's annual electricity usage, saving ~ \$11,500 in electricity costs

Impact

- Showcases feasibility of wind energy for agricultural applications
- Supports generational stability for family farms

In December 2023, **Goldberg Family Farm**, a  fifth-generation agricultural enterprise in rural Minnesota, installed two 25 kW wind turbines on 80-foot towers. Facing rising energy expenses, the project aimed to reduce electrical costs and ensure the farm's survival for future generations.

Ecocycle implemented the dual-turbine system to harness the area's wind resources. The system is expected to offset 43% of the farm's annual electricity usage, providing significant cost savings with a projected 5-year payback.



More than 147,000 MN properties have wind resources suitable for distributed wind with a combined technical potential of 590 MW, per NREL

Want further information? Please contact:

Lloyd Ritter, DWEA Policy Director, lritter@greencapitol.net, 202-215-5512

www.DistributedWind.org