

San Isabel Electric Cooperative¹

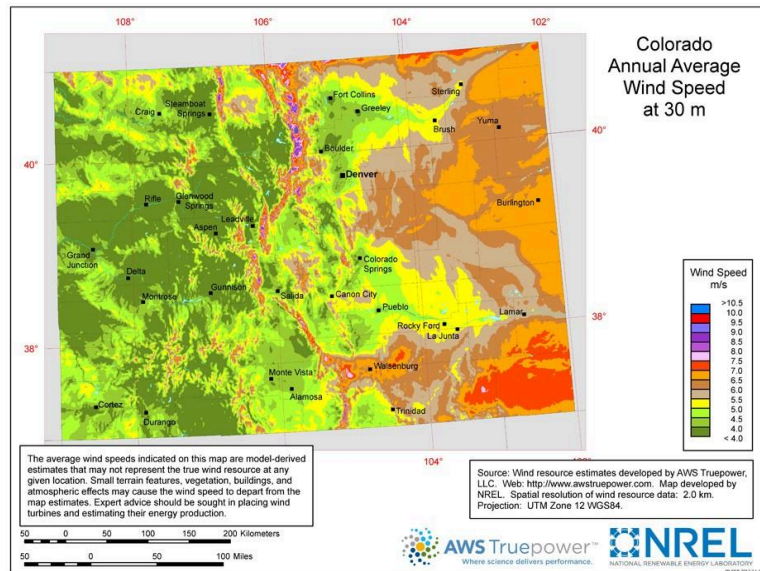
Walsenburg, CO 81089 | SANY | 4 x 2 MW Turbines, 80 foot Tower | Installed by SANY



Photo Credit: Google Maps

San Isabel Electric Association (SIEA), serving 24,000 members across southern Colorado, embarked on an innovative distributed wind project in 2013. Still in operation in 2025, the Huerfano River Wind Farm, an 8 MW facility featuring four 2 MW SANY turbines, was developed to meet Colorado's Renewable Portfolio Standard while reducing wholesale power costs. Located in a “special wind region” on the eastern slope of the Rocky Mountains, the project leverages the area's excellent wind resources to generate approximately 4% of SIEA’s annual energy needs.

The wind farm’s success stems from its strategic location and well-aligned production with the co-op’s demand. Connected to SIEA’s existing Huerfano Substation, the project distributes clean energy to about one-third of the co-op's members. The wind farm’s daily production often coincides with SIEA’s peak demand, enhancing its value to the grid. Despite some maintenance challenges, including gearbox replacements, the project has achieved an average capacity factor of 24%, with some years reaching 27%.



Key Findings

- 19,000,000 kWh produced annually
- SEIA entered a 25-year power purchase agreement (PPA) with SANY America
- PPA contributes to localized rate stability

More than 136,000 CO properties have wind resources suitable for distributed wind, with a combined technical potential of 1500 MW, according to NREL

Want further information? Please contact:

Lloyd Ritter, DWEA Policy Director, lritter@greencapitol.net, 202-215-5512 www.DistributedWind.org

¹<https://www.cooperative.com/programs-services/bts/radwind/Documents/RADWIND-Case-Study-San-Isabel-Nov-2021.pdf>